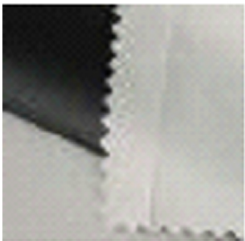


Fabric Types & Color Options

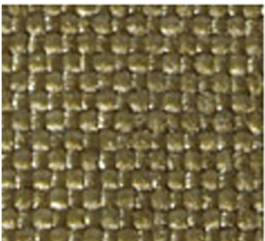
Laminated Nylon:

3-ply construction of 70-denier fabric coated with waterproof polyvinyl and cotton twill backing. Provides greater strength and is more puncture resistant than standard nylon. Fabric used in all bag styles. *Fabric can be silk-screen imprinted or embroidered.*



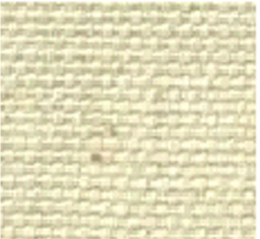
1000 Denier or Basket Weave Nylon:

A high performance fabric resistant to abrasions, tears, scuffs and punctures. 1000 Denier and Basket Weave Nylon is accepted standard for maximum durability, and has a water repellent urethane coating. *Fabric can be silk-screen imprinted or embroidered.*



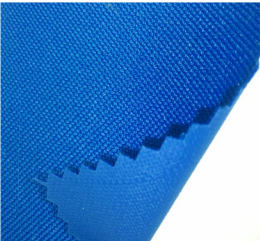
Canvas:

Available in 10 oz and 14 oz weight. Rugged cotton canvas is extremely durable. Its rigid construction is designed for everyday use. *Fabric used in all bag styles. Fabric can be silk-screen imprinted or embroidered.*



600 x 300 Denier Polyester Cloth:

A very popular item with it's texturized yarns, and matching back. 600x300 Deiner Polyester cloth is a medium-weight polyester fabric. This versatile material has a durable 0.55mm PVC backing, and it is commonly used for zipper wallet and transit bags. *Fabric can be silk-screen imprinted or embroidered.*



Expanded Vinyl:

Expanded-able fabric with vinyl coating and leather-like grain. Easy to clean. Most commonly used in zipper wallets. *Fabric can be silk-screen imprinted.*



200 Denier Nylon:

200-denier fabric with waterproof polyvinyl coating is extremely lightweight, yet sturdy. Most commonly used for transit bags. *Fabric can be silk-screen imprinted.*

